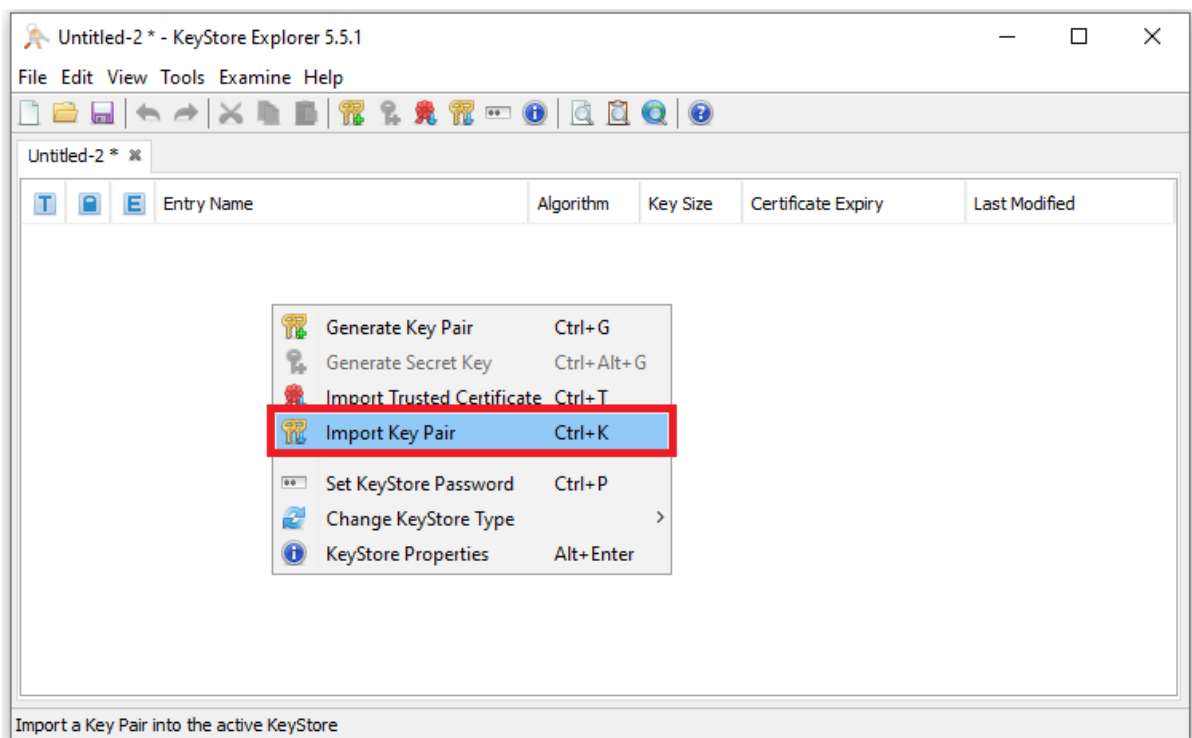
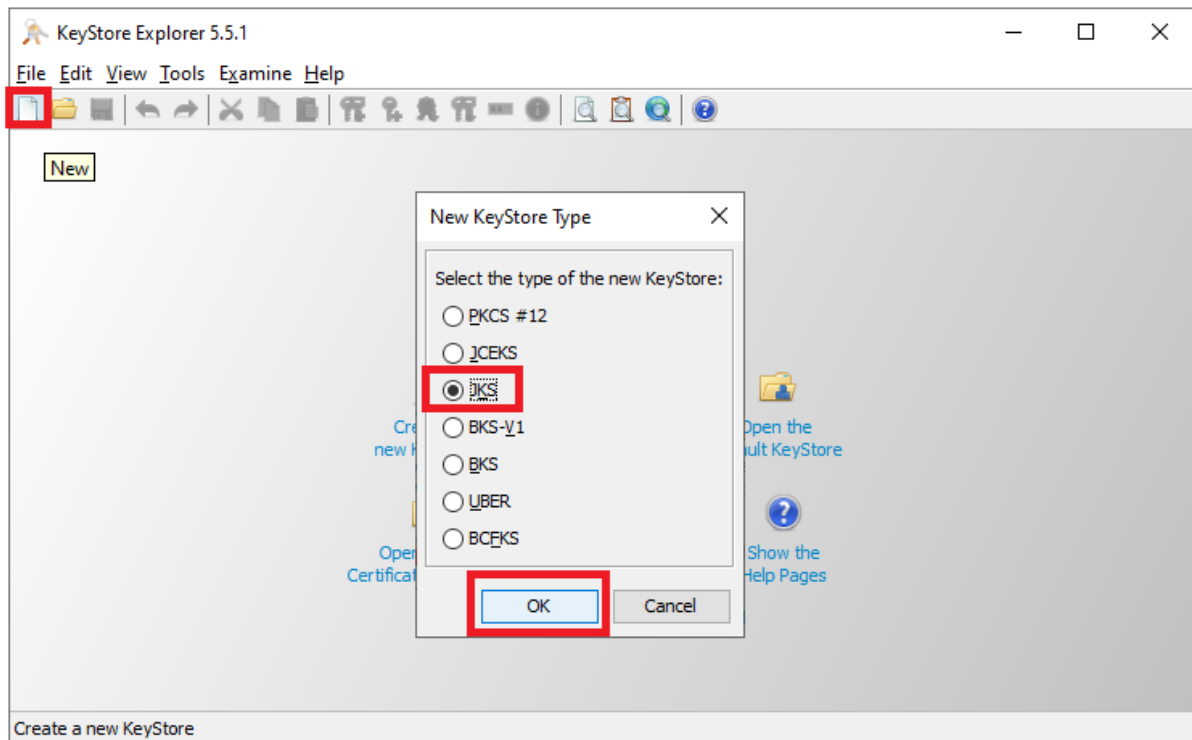
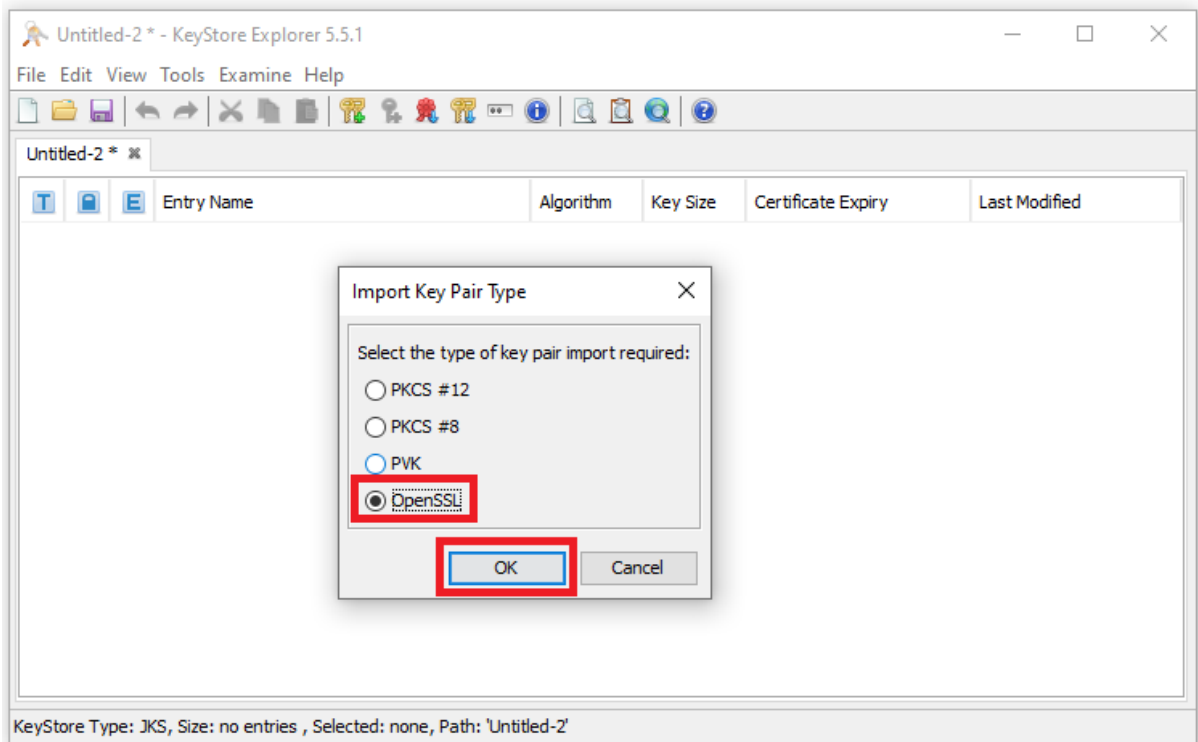


## Vytvoření JKS keystore s testovacím certifikátem PostSignum

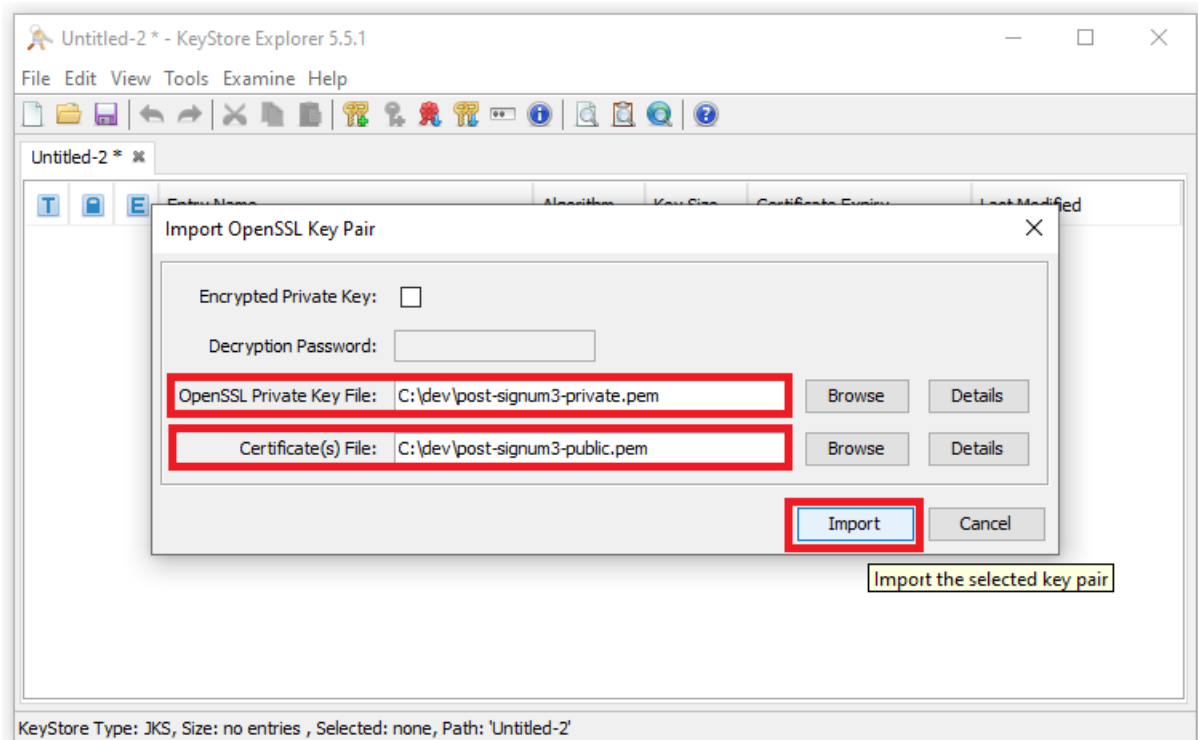
<https://keystore-explorer.org/downloads.html>

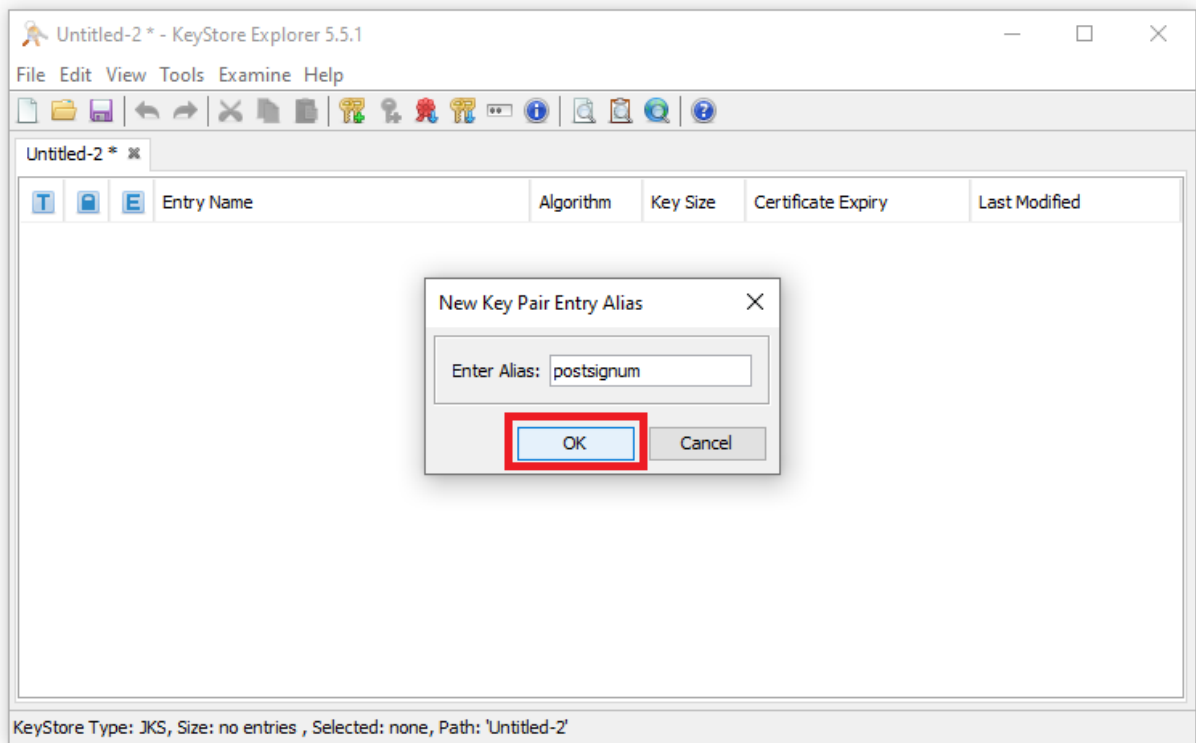




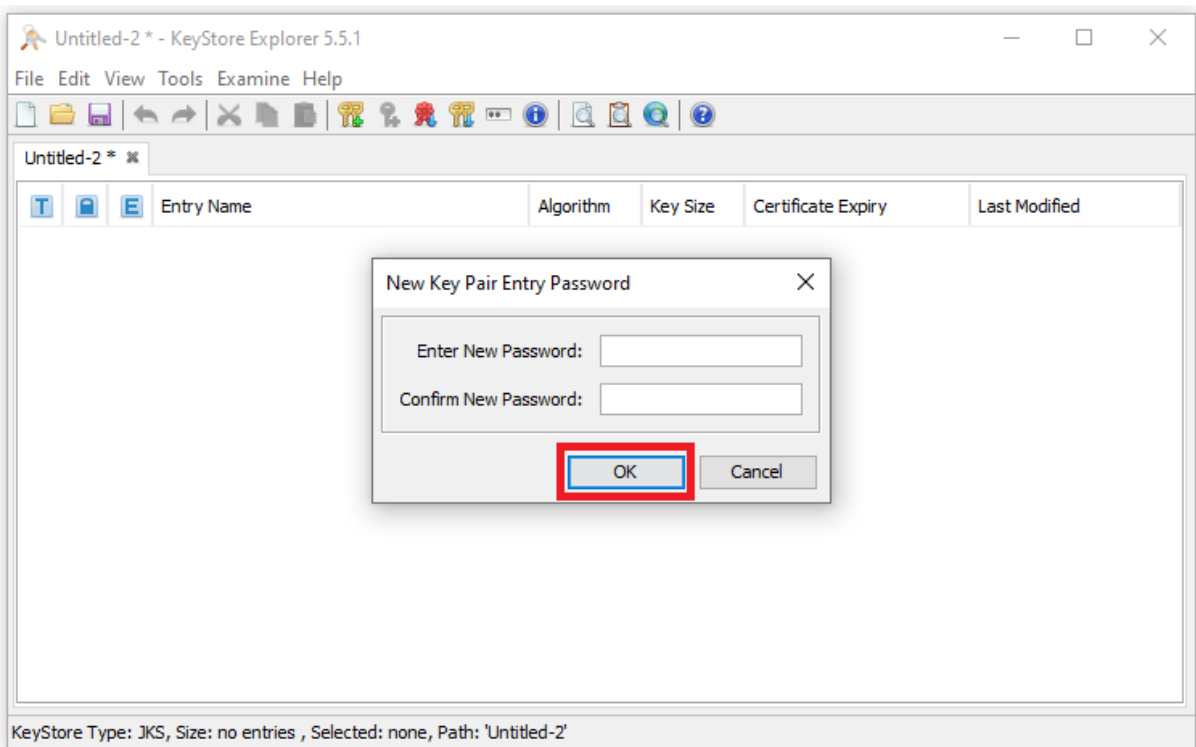
Vyberte cestu k privátnímu klíči a certifikátu z PostSignum.

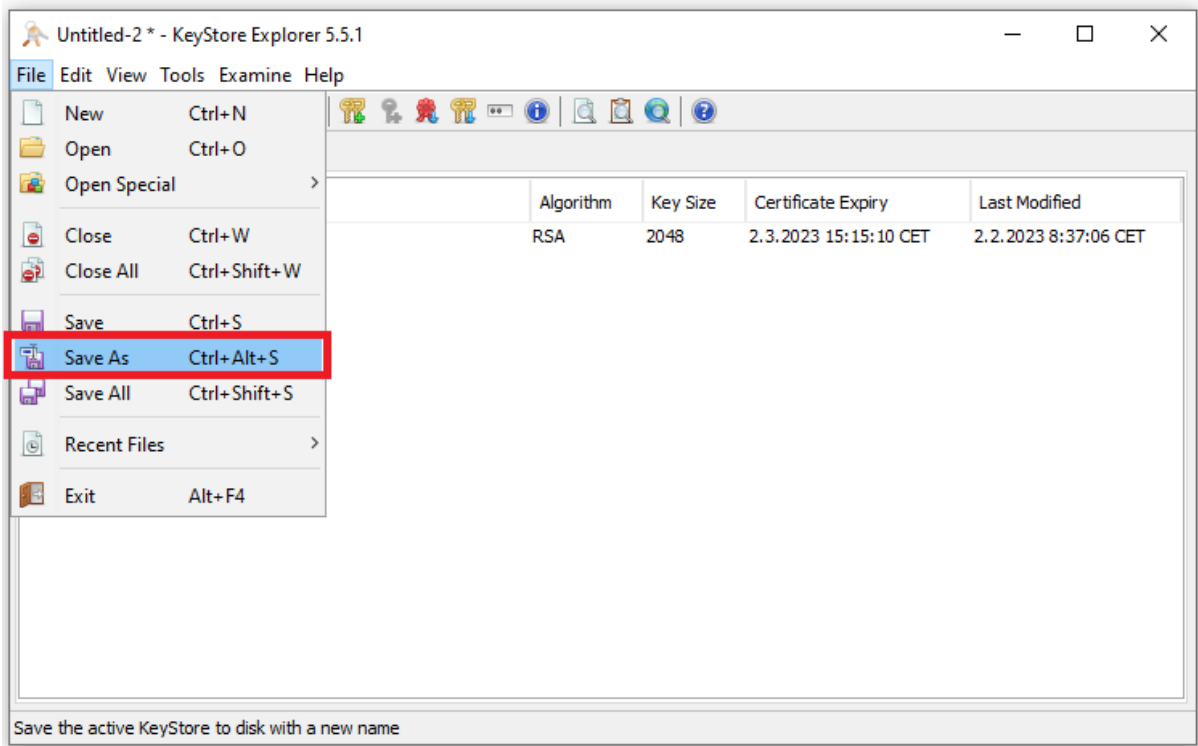
V případě, že máte privátní klíč zašifrovaný, tak zvolte "Encrypted Private Key" a zadejte heslo.



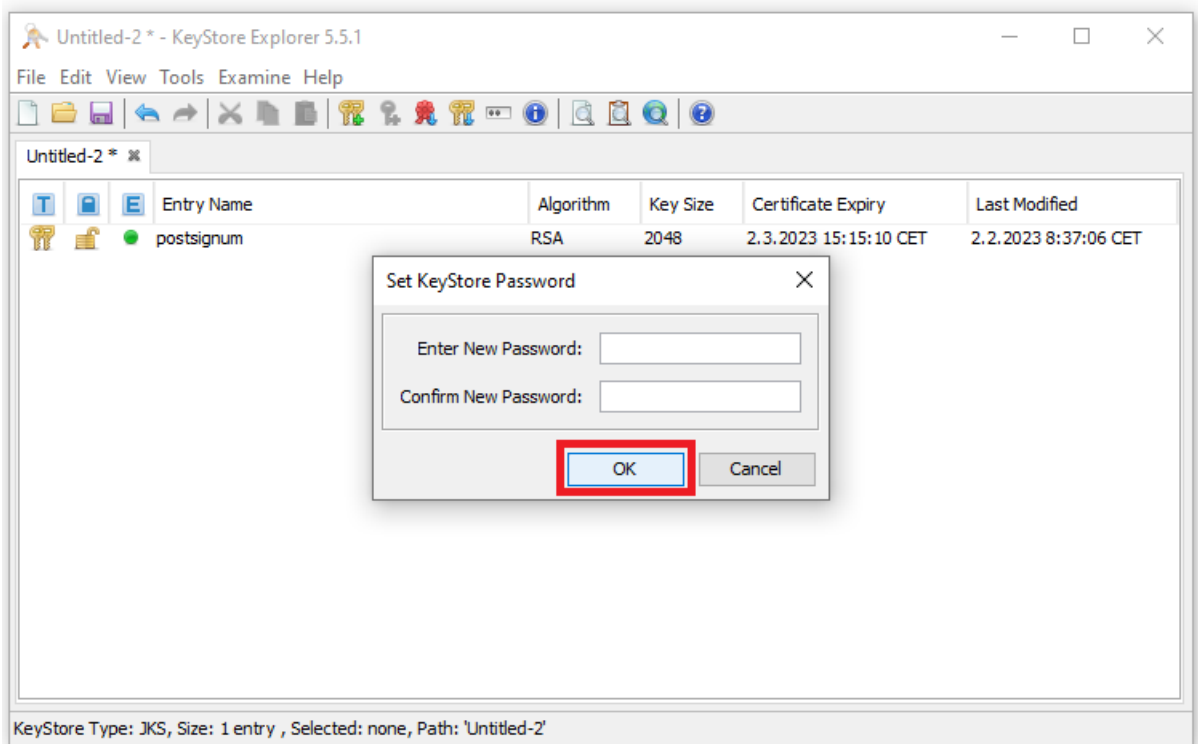


Doporučuji vložit bez hesla

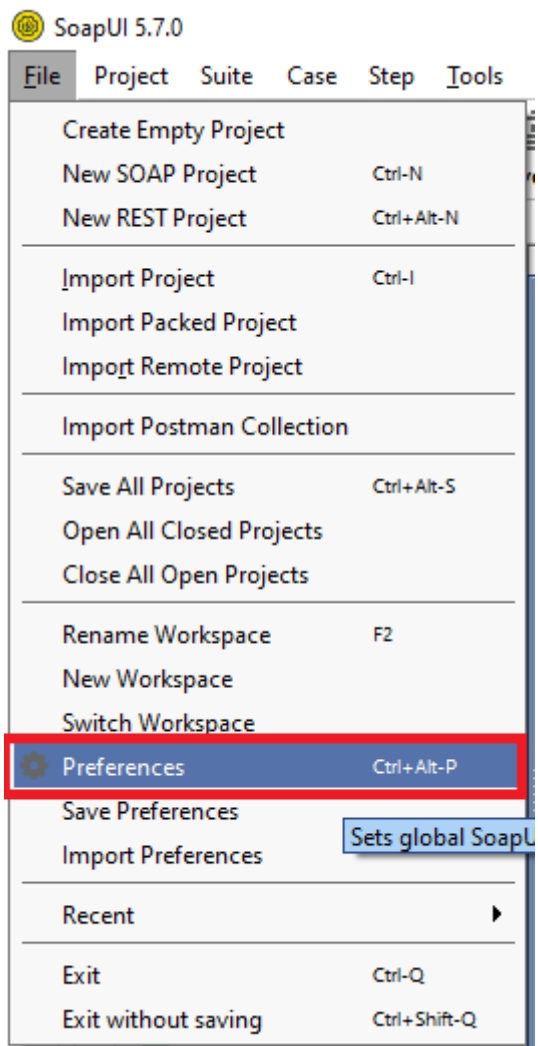




Doporučuji uložit bez hesla



## Nastavení JKS Keystore v SoapUI



Vyberte cestu k vámi vytvořenému keystore

The image shows a screenshot of the SoapUI Preferences dialog box, specifically the SSL Settings section. The dialog box has a title bar with the SoapUI logo and the text "SoapUI Preferences". Below the title bar, there is a sub-header "SoapUI Preferences" and a subtitle "Set global SoapUI settings". On the left side, there is a tree view of settings categories, with "SSL Settings" selected and highlighted in blue. The main area of the dialog box contains the following settings:

- KeyStore:** A text field containing the path "C:\dev\dmvs\_cert.jks" and a "Browse..." button to its right.
- KeyStore Password:** An empty text field.
- Enable Mock SSL:** A checked checkbox with the label "enable SSL for Mock Services".
- Mock Port:** An empty text field.
- Mock KeyStore:** An empty text field and a "Browse..." button to its right.
- Mock Password:** An empty text field.
- Mock Key Password:** An empty text field.
- Mock TrustStore:** An empty text field and a "Browse..." button to its right.
- Mock TrustStore Password:** An empty text field.
- Client Authentication:** An unchecked checkbox with the label "requires client authentication".

At the bottom right of the dialog box, there are "OK" and "Cancel" buttons. The "OK" button is highlighted with a red box.